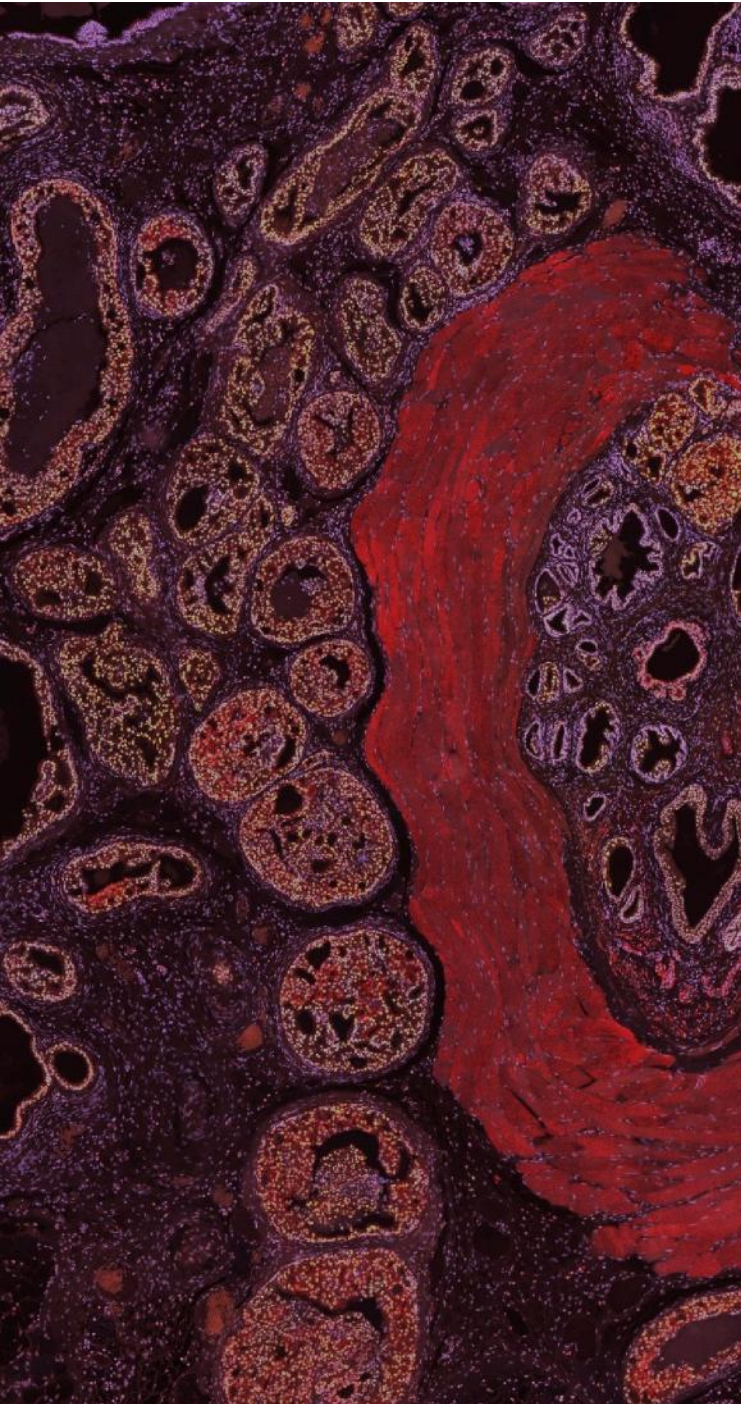




**Weill Cornell  
Medicine**

Sandra and Edward  
Meyer Cancer Center



# ANNUAL REPORT 2022-2023

# Contents

---

Director's Reflection - 01
Meyer Cancer Center Impact - 02
Outstanding Research - 08
Leadership that Gets Results - 17

*Cover Image: Mouse Prostate Immunofluorescence*

*Credit: Drs. Juan Francisco Linares Rodriguez / Tania Cid, Dr. Maria Diaz-Meco's Lab*

*Winner - inaugural Meyer Cancer Center Scientific Photo Contest*



# Director's Reflection

---

Dear Friends,

For nearly a decade now, the scientific community and staff of the Sandra and Edward Meyer Cancer Center scientific community and staff have pursued our core mission: to advance cancer prevention and care through innovative scientific discovery and engaging communities to directly and equitably reduce the burden of cancer.

This past year, our basic and physician-scientists collaborated across the Meyer Cancer Center sphere - Brooklyn, Queens and Manhattan - living up to our *one* Meyer Cancer Center ethos. They combined their efforts to translate discoveries made in the lab into innovative clinical trials and therapies, and we're excited to see where these efforts will lead.

We know that for our work to make a difference, we must partner with our community members and other institutions. So in 2022, our Community Advisory Board and Patient & Family Advisory Council guided many of our research studies and clinical trials to ensure our strategies are culturally competent and uphold our promise to provide the population we serve with world-class care.

All these efforts and more covered in this annual report ensured that we provided excellent patient-centered care and moved our outstanding research forward.

I'm so proud of our team and look forward to another terrific year!

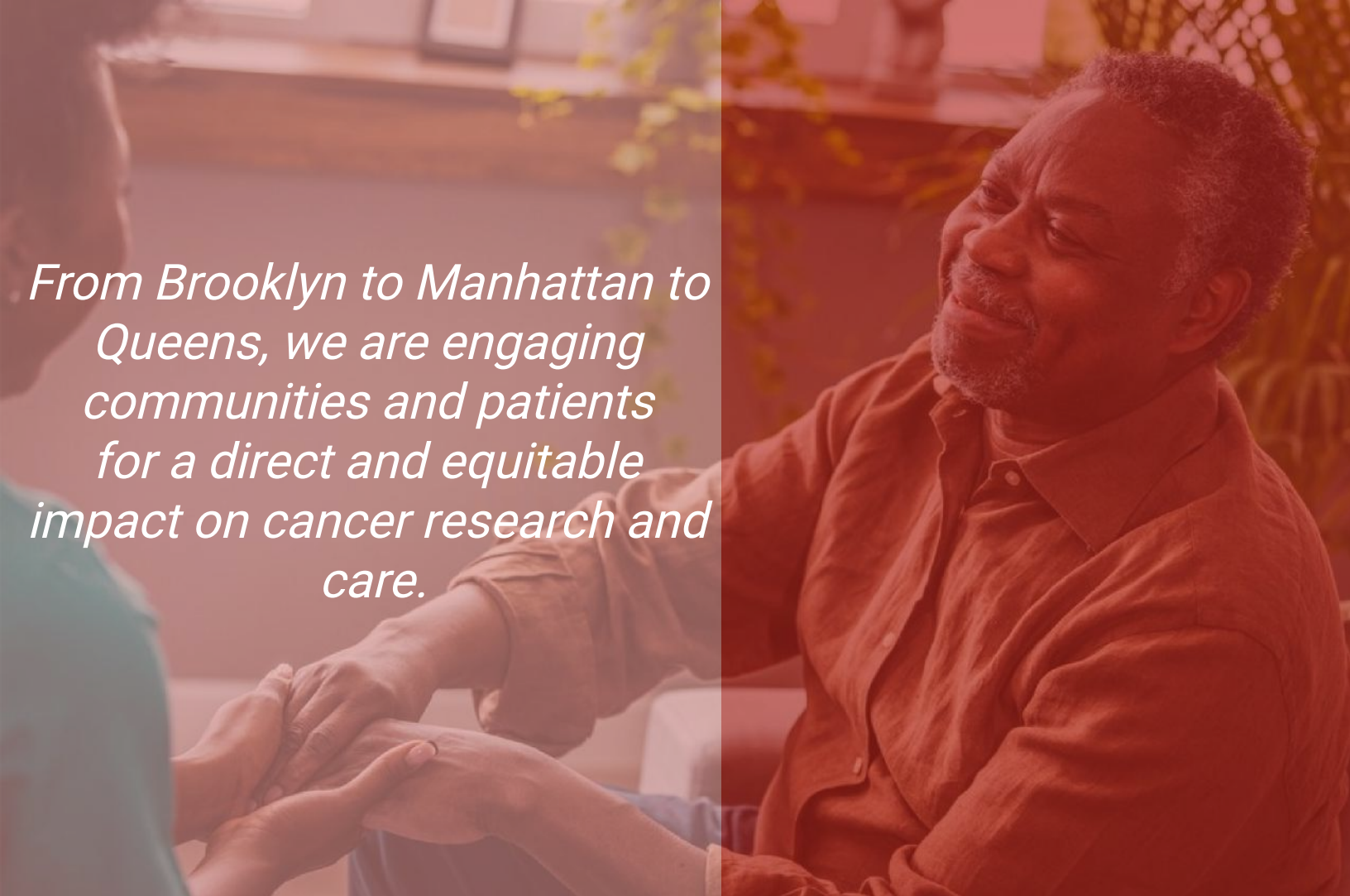
Dr. Jedd Wolchok  
*Sandra and Edward Meyer Director, Meyer Cancer Center*



"We know that for our work to make a difference, we must partner with our community members and other institutions."

# Meyer Cancer Center Impact

---



*From Brooklyn to Manhattan to  
Queens, we are engaging  
communities and patients  
for a direct and equitable  
impact on cancer research and  
care.*

Ms. Mellissa Spells, a community health worker, had spent much of her life fundraising for the American Cancer Association and educating women about breast cancer. But nothing prepared her for the jolt she felt when, at 51, in January 2021, she was diagnosed with breast cancer. She felt lost.

Help came when her Weill Cornell Medicine doctor explained that obesity is associated with worse breast cancer-specific survival risk, and quickly referred her as a candidate for **BOLD, a Meyer Cancer Center breast cancer and obesity weight loss program at NewYork-Presbyterian Queens.**

Launched by Dr. Lauren Elreda, the program addresses patients' weight in their treatment to optimize overall outcome.



## BOLD Steps took Ms. Spells from 324 lbs to 215 lbs



*"I learned the role of obesity in developing breast cancer and was offered the opportunity to receive and sustain care to address my obesity and overall health."*



*"Yoga helped me feel better physically and strengthened my spirits. I knew my body's condition was bad, but yoga helped me internalize it."*



*"The dietitian and I had some interesting conversations about what I was eating. I knew better, but it was a struggle to give up fast food."*



*Even over a year after my surgery, my care team still contacted me. I asked them why they cared so much. They said they try to hold on to their patients for as long as possible. - Ms. Mellissa Spells*

## BOLD Facts

*Began in March 2021 with referrals of appropriate candidates from Bariatric Surgery.*



**Dr. Lauren Elreda**  
Assistant Professor of Medicine

*"How we eat, whether or not we exercise, and other lifestyle choices impact our bodies at a cellular level. Studies have shown that obesity is associated with worse breast cancer-specific survival risk. BOLD aims to integrate bariatrics and weight loss medicine."*



# Impact-Driven Oncology Navigation

Across four NewYork-Presbyterian campuses affiliated with Weill Cornell Medicine, navigators offer individualized assistance to patients and caregivers to overcome barriers during the cancer care journey. Oncology patient navigators are critical members of the interdisciplinary clinical team. They can also play an essential role in increasing participation in clinical research.

**Karen Lambert, an oncology patient navigator and a care management team member specific to blood cancer patients, is one of them.**



## How Ms. Lambert spends her workday



At 8 a.m., Ms. Lambert reviews and prints the weekly patient schedule to identify new blood cancer patients, then assesses and reviews informed consent protocols.



She meets patients individually from 9 a.m. to 12 p.m. and answers all non-clinical questions. As a cancer survivor, her empathy and understanding help to establish initial rapport and build patient trust.



Between 12 p.m. - 5 p.m., Ms. Lambert checks with doctors who often ask that she speak with a patient about a specific treatment decision, whether the standard of care or clinical trials they may be hesitant about.



After hours, Ms. Lambert assesses patient barriers from their conversations—co-payments, food, rent, utilities—and may help with grant applications and other resources. She also checks in on existing patients. Sometimes Ms. Lambert may receive a distress call from a patient late at night but no two days are the same.



*Conversations are crucial because you'd be surprised at the little things people base their care decisions on. It takes time to build trust in the navigator-patient relationship. So I focus more on creating impact than on the numbers, though both are important.*

- Ms. Karen Lambert



**Dr. Erica Phillips**  
Jack Fishman Associate Professor of Cancer Prevention  
Associate Director, Community Outreach and Engagement

*Since its inception in 1990 at Harlem Hospital, patient navigation has and continues to close gaps in the detection and treatment of cancer. However, this vital workforce has not been equitably distributed across our health care system. Over the past two years, our office has amplified the voice of navigators and supported standardizing the job title, training, workflows and data capturing. NewYork-Presbyterian Brooklyn Methodist Hospital and NewYork-Presbyterian Lower Manhattan Hospital are building on the navigation efforts at our Upper East Side and Queens locations and now have a team of well-trained oncology navigators. Lower Manhattan will also receive support. We look forward to others fully embracing the value of this undeniable workforce.*

COMMUNITY



6,569

people reached

163

outreach events

educational sessions

135

31

total MCC/community-based outreach activities & cancer center screening events



*I am honored and fortunate to work with partners who labor tirelessly to make cancer screening, care and education accessible in our Queens and Brooklyn neighborhoods.* - Ms. Claudia Duarte, community outreach coordinator

Our patient community is home to nearly six million individuals across 38 Brooklyn, Manhattan and Queens neighborhoods. The community is one of the world's most linguistically and ethnically diverse.

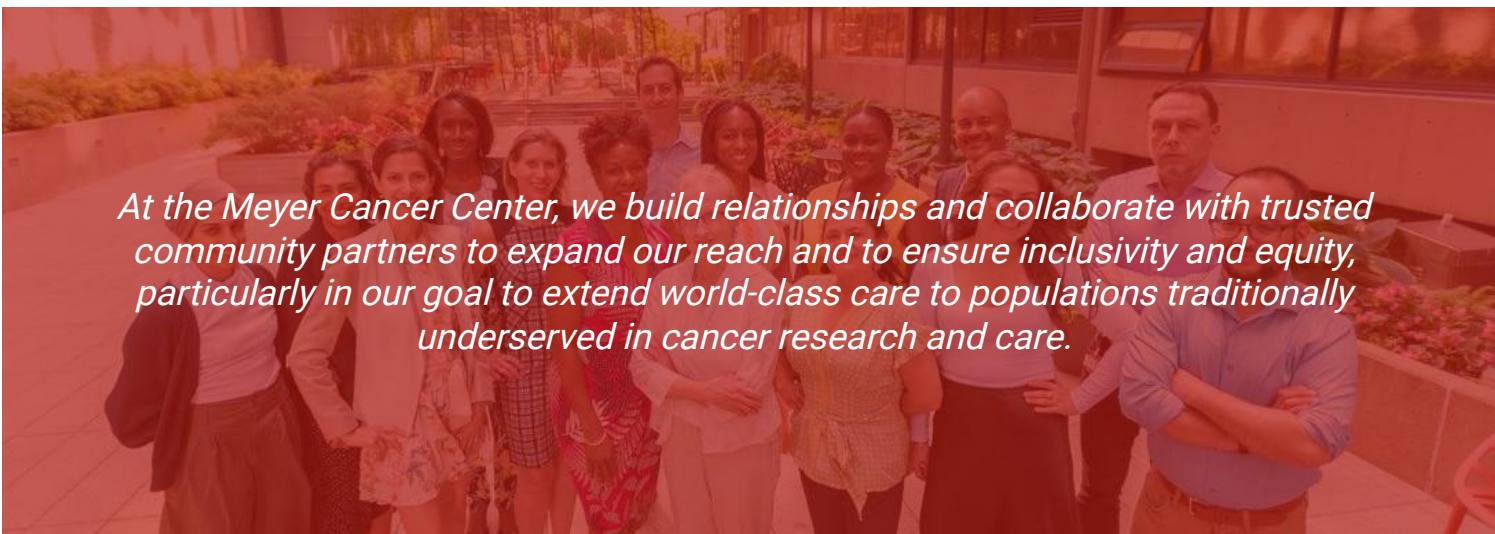
Together with our community partners, the Office of Community Outreach and Engagement tackles barriers to care in the Meyer Cancer Center's community, ensuring excellent, equitable care.

# Trusted Community Partners Expand Our Collective Impact

## Community Advisory Board

Meyer Cancer Center's Office of Community Outreach and Engagement is guided and supported by a growing nine-member Community Advisory Board. The members represent individuals and organizations with expertise in cancer conditions to strengthen our scientific and clinical programs through ongoing bi-directional engagement. In addition, the Meyer Cancer Center's research programs also have designated members who regularly attend the Community Advisory Board's quarterly meetings.

At least one program presents ongoing or programmatic research nearing the clinical trials phase to the advisory board for feedback.



*At the Meyer Cancer Center, we build relationships and collaborate with trusted community partners to expand our reach and to ensure inclusivity and equity, particularly in our goal to extend world-class care to populations traditionally underserved in cancer research and care.*

## Meyer Cancer Center Patient & Family Advisory Council

The Meyer Cancer Center Patient and Family Advisory Council amplifies the patient's voice and uses it to promote a culture of patient-centered care among our oncology practices.

The Patient and Family Advisory Council began in June 2018 with a handful of members, and today includes eight advisors who represent the diversity of our patient population. The advisors work with clinicians and hospital staff on initiatives related to the patient experience. They meet monthly to share priorities and goals.

Hospital liaisons represent different clinical practices, patient experience departments, administration, service lines, social work and the patient resource center.



# Training and Mentoring a Diverse Cancer Workforce for the Future

Over the past year, the Meyer Cancer Center Office of Education continued offering exceptional cancer-focused education and mentoring programs across the pipeline from high school to clinical and postdoctoral fellows and faculty.

## Principles of Clinical Research & Methodology Course

Early-Career Clinical Investigators

19

Senior clinical investigators and basic/translational researchers

16

Clinical fellows and junior faculty attendees.

## Summer Internship Program

High School and College Students

40

High school and college students from diverse backgrounds

63%

Female participants, nearly a quarter of whom came from underrepresented backgrounds in biomedicine

## Faculty Advancement and Research Mentorship (FARM)

Junior Faculty

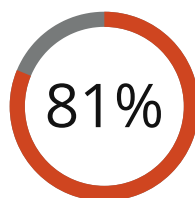
153+

Junior faculty participants

28

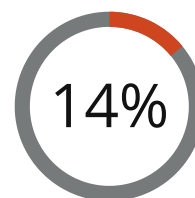
Departments and divisions across Weill Cornell Medicine have participated in FARM

## FARM NIH Funding Success Rate\*



Meyer Cancer Center

VS



National Average

\*Funding rate is the number of unique faculty who receive grants versus the number of all faculty who applied.



Dr. Paraskevi Giannakakou  
Professor of Pharmacology in Medicine

"I am inspired and empowered by the vibrant and intellectually stimulating community of scientists, clinicians, translational investigators, trainees and students. Brilliance, talent, dedication and a collaborative spirit permeate the Meyer Cancer Center."

# Outstanding Research

---



*We conduct practice-changing research in cancer biology and prevention and detection, and maintain a robust clinical research portfolio.*

# A Snapshot of Research Activity

Meyer Cancer Center members are spread across four research programs based on shared research interests: Cancer Biology, Cancer Genetics and Epigenetics, Experimental Therapeutics, and Cancer Prevention and Control. Each program stimulates the exchange of ideas and nucleates collaborations across the center.

Below is a snapshot of grants received in 2022 and publications.

## Grants (Cancer-focused Direct Costs\*)



Total Funding



Peer Reviewed



Non-Peer Reviewed

*\*Direct costs fund research.*

## Publications

**559** papers

published in 2022



impact factor > 10

## Clinical Research and New-York Presbyterian/Weill Cornell Medical Center

**675** patients

enrolled to therapeutic trials in 2022



**50%** of the patients were men, while 49% were women.



# Cancer Biology Program

The Cancer Biology Program integrates cellular, molecular and biomedical engineering approaches to investigate basic mechanisms of interaction between malignant cells and their microenvironment.

**138** published journal articles

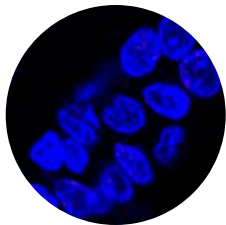


in high-impact\* journals  
*\*High impact journals have a calculated impact factor greater than 10*

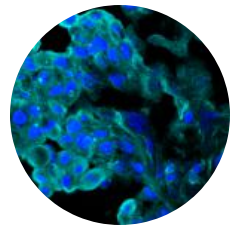
**13** new program members



*We are looking to continue exploring pre-clinical and clinical models of several cancers, including breast, colorectal, pancreatic, ovarian, lymphoma, glioblastoma and melanoma, as well as therapeutic resistance, immunology and immunotherapy. - Dr. Tim McGraw, Cancer Biology Program co-Leader*



## Research Highlights



### Neutrophils Can Be Key Antitumor Weapons

This study investigated how a T cell-based immunotherapy could destroy melanoma tumors even though many tumor cells lacked the markers or “antigens” targeted by the T cells. The T cells, in attacking the tumors, activated a swarm of neutrophils –which in turn killed the tumor cells that the T cells couldn’t eliminate. The findings could lead to new immunotherapies that harness this potent antitumor immune response.

**-Drs. Taha Merghoub, Jedd Wolchok, Daniel Hirschhorn and co-researchers. *Cell*, March 2023**

### A Potential New Target for Cancer Immunotherapies

Tumors can use an enzyme called ART1 to thwart antitumor immune cells, making the enzyme a promising new target for immunity-boosting cancer treatments. In animal models of cancer, blocking ART1 increased the presence of the tumor-fighting immune cells within tumors and slowed or stopped tumor growth.

**-Drs. Timothy McGraw, Sandra Demaria, and collaborators from Weill Cornell Medicine and Albert Einstein College of Medicine. *Science Translational Medicine*. March 2022**

## Leadership



Timothy McGraw, Ph.D.  
Professor of Biochemistry



Juan Cubillos-Ruiz, Ph.D.  
William J. Ledger, M.D., Distinguished Associate Professor for Infection and Immunology in Obstetrics and Gynecology

# Cancer Genetics and Epigenetics Program

The Cancer Genetics and Epigenetics program contributes to the fundamental understanding of cancer-related genetic mutations and epimutations that fuel cancer development and progression.

**138** published journal articles



in high-impact\* journals  
*\*High impact journals have a calculated impact factor greater than 10*

**5** new program members



*Long-term, our goal is to translate our scientific findings into new oncology diagnostics and therapies. - Dr. Ekta Khurana, Cancer Genetics and Epigenetics Program co-leader*



## New Prostate Cancer Subtype May Illuminate Treatment Strategy

Researchers examined the molecular changes within an advanced malignancy called castration-resistant prostate cancer, which arises when tumors evade treatment that deprives them of the hormones that drive their growth. As a result, they found a previously unrecognized form of hormone therapy-resistant prostate cancer and a set of molecules that cause its growth. This discovery opens the door to developing therapies that treat this specific disease.

**-Dr. Ekta Khurana and co-researchers from Weill Cornell Medicine and Memorial Sloan Kettering. *Science*. May 2022**



## Research Highlights

### Precancerous "Clonal Outgrowth" in Blood Cells

A common, spontaneous mutation in blood stem cells linked to higher risks of blood cancer and cardiovascular disease may promote these diseases by altering their programming of gene activity and the mix of blood cells they produce. These findings help us understand how these mutated cells outgrow normal cells and pave the way for possible interventions targeting these cells to prevent cancers.

**-Dr. Dan Landau and co-collaborators from Weill Cornell Medicine, NewYork-Presbyterian, the New York Genome Center, Harvard Medical School and Dana-Farber Cancer Institute. *Nature Genetics*. September 2022**

## Leadership



**Dr. Steven Lipkin**  
Gladys and Roland Harriman  
Professor of Medicine  
Professor of Genetic Medicine



**Dr. Ekta Khurana**  
Associate Professor of Physiology and  
Biophysics  
Associate Professor of Computational  
Genomics in Computational Biomedicine  
WorldQuant Foundation Research Scholar

# Cancer Prevention and Control Program

The Cancer Prevention and Control program aims to understand the determinants of cancer incidence, morbidity, and mortality across the cancer care continuum, and develop and disseminate prevention/intervention strategies to reduce morbidity and mortality from cancer in the community.

**137** published journal articles

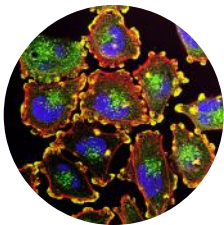


**9%** in high-impact\* journals  
*\*High impact journals have a calculated impact factor greater than 10*

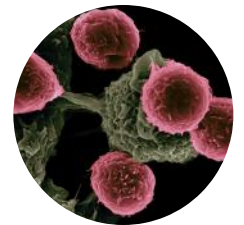
**11** new program members



*Given the diversity in our catchment area, research addressing health literacy, developing more culturally sensitive interventions, and improving health equity for all are priorities for our developing program. - Dr. Rulla Tamimi, Cancer Prevention and Control Program leader*



## Research Highlights



### Long-Term Utilization of Targeted Cancer Prevention

This study aimed to measure the long-term utilization of targeted cancer prevention and quality of life among at-risk relatives. The two-year follow-up of the original pilot study revealed that clinician-facilitated cascade testing resulted in genetically targeted cancer screening and prevention with no negative impact on quality of life.

**-Drs. Kevin Holcomb, Ravi Sharaf, Steven Lipkin, Eloise Davis-Chapman and co-investigators. *Cancer*, October 2022**

### 2021 Lung Cancer Screening Guidelines Reduced Existing Eligibility Disparities

The 2021 changes to the U.S. Preventive Services Task Force lung cancer screening guidelines were associated with reductions in but not the elimination of existing eligibility disparities in lung cancer screening among Black and white adults. These findings suggest that accounting for factors beyond age and pack-years of smoking is needed when tailoring guidelines to improve screening eligibility among groups at high risk of lung cancer.

**-Drs. Laura Pinheiro, Erica Phillips and co-researchers. *Journal of the American Medical Association*, September 2022**

## Leadership



**Dr. Rulla Tamimi**  
Professor of Population Health Sciences  
Professor of Epidemiology in Pathology and Laboratory Medicine



# Experimental Therapeutics Program

The Experimental Therapeutics program advances cancer therapeutics through innovative investigator-initiated clinical trials that leverage essential and potentially transformative discoveries.

240

published journal articles



in high-impact\* journals

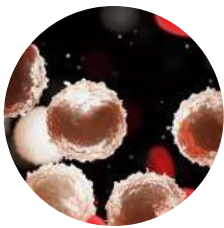
*\*High impact journals have a calculated impact factor greater than 10*

12

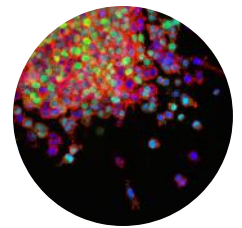
new program members



*Our clinical trials address the needs of the regional community, particularly emphasizing health disparities due to race, ethnicity and gender. - Dr. Scott Tagawa, Experimental Therapeutics Program co-leader*



## Research Highlights



### Adding Epigenetic Drug to Standard Chemotherapy Was Effective in Pilot Study for T-cell Lymphoma

Nearly 90 percent of patients with an aggressive subtype of non-Hodgkin lymphoma had their cancer go into remission in a small phase 2 clinical trial testing a treatment to make chemotherapy more effective. The treatment shows promise for this T-cell lymphoma subtype.

**-Drs. Jia Ruan, Peter Martin, John Leonard, Leandro Cerchietti, Giorgio Inghirami, Olivier Elemento, Ari Melnick and researchers from multi-institutions. *Blood, May 2023***

### Less Lung Tissue Removal Needed for Early-Stage Cancer

Surgery that removes only a portion of one of the five lobes that comprise a lung is as effective as the traditional surgery that removes an entire lobe for certain patients with early-stage lung cancer, according to results of a phase 3 multicenter clinical trial sponsored by the Alliance for Clinical Trials in Oncology, an NCI-supported clinical trials network.

**-Dr. Nasser Altorki and co-collaborators. *New England Journal of Medicine. February 2023***

## Leadership



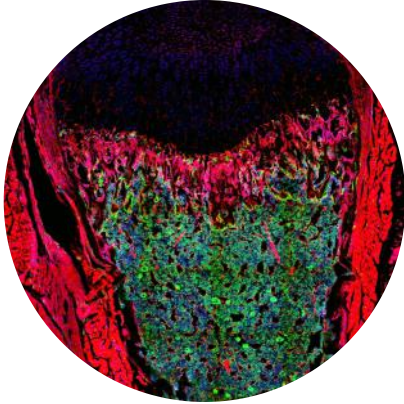
**Dr. Nasser Altorki**  
David B. Skinner, M.D. Professor of Thoracic Surgery  
Chief of the Division of Thoracic Surgery



**Dr. Scott Tagawa**  
Professor of Medicine  
Professor of Medicine in Urology

# Over 40 Collaborative Seminar Series and Research Meetings!

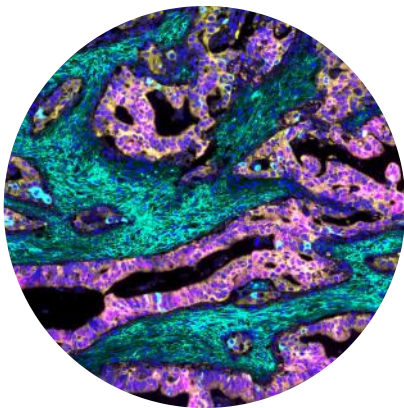
---



## Director's Seminar Series

This monthly series features presentations from external speakers on various clinical, basic, translational and population-based cancer research topics. Members of each research group recommend speakers.

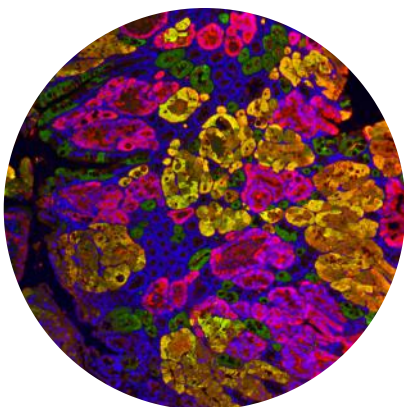
*Photo: Immunofluorescent images of cellular dynamics of growing long bones, skeletal cells (green) and hematopoietic cells (red)/long bone/mouse  
Credit: Dr. Seoyeon Bok, Dr. Matthew Blake Greenblatt 's lab  
Finalist - inaugural Meyer Cancer Center Scientific Photo Contest*



## Research Program Meetings

Monthly Research Program meetings host internal speakers. They are a platform for Meyer Cancer Center members to share scientific findings and identify potential collaborators.

*Photo: An aggressive colorectal tumor revealing a unique biomolecular profile, growth mechanism, and drug target.  
Credit: Dr. Jorge Moscat  
Finalist - inaugural Meyer Cancer Center Scientific Photo Contest*



## MCC 360

Launched in 2022, this quarterly series explores critical research questions among our patients and community. In an interactive mini-symposium style meeting, we bring individuals from all MCC research programs, bench to bedside, and a patient or patient advocate. Each themed session consists of four to five short talks and a moderated panel discussion with the presenters.

*Photo: Mouse colon tumor with genetic drivers tagged with fluorescent markers.  
Credit: Dr. Marie Parsons, Dr. Luke Dow's lab  
Finalist - inaugural Meyer Cancer Center Scientific Photo Contest*

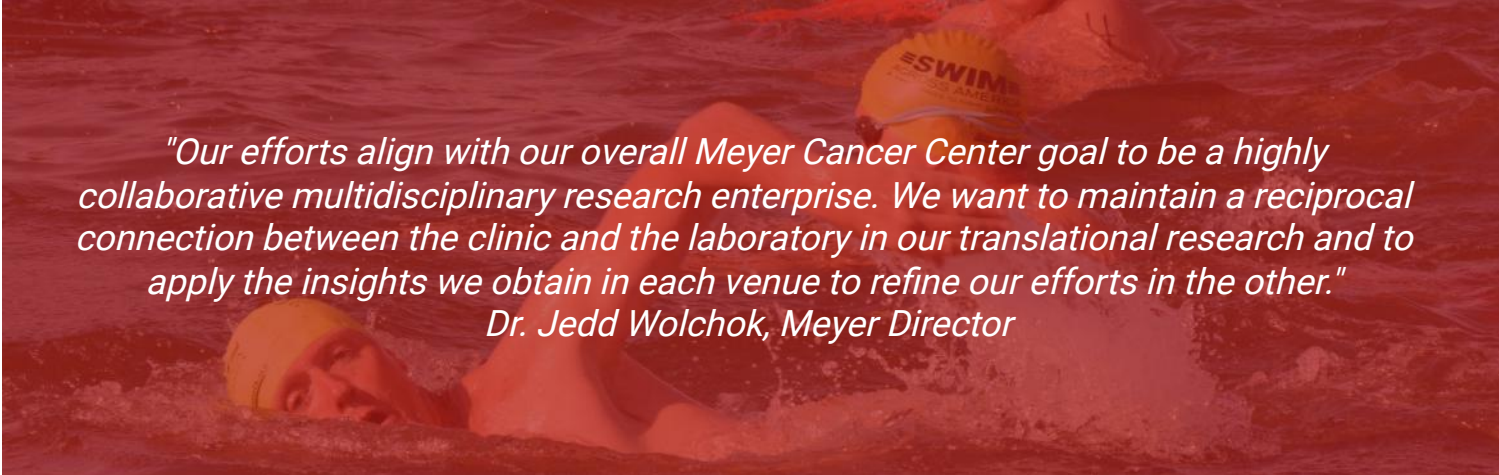
# Philanthropic-Research Partners

## Help Us Push Scientific Boundaries

### The Ludwig Collaborative Laboratory at Weill Cornell Medicine

The Ludwig Collaborative Laboratory at Weill Cornell Medicine is a collaboration between Weill Cornell Medicine and Ludwig Cancer Research.

Co-directed by Dr. Jedd Wolchok and Dr. Taha Merghoub, the laboratory focuses on tumor immunology, emphasizing translational research to identify and develop new immunotherapeutic strategies and drugs for treating melanoma and other types of cancer. In addition, the Ludwig Collaborative Laboratory at Weill Cornell Medicine will also investigate cell types and molecules required for effective immune responses and immune resistance, as well as biomarkers and genetic determinants of response to immunotherapy.



*"Our efforts align with our overall Meyer Cancer Center goal to be a highly collaborative multidisciplinary research enterprise. We want to maintain a reciprocal connection between the clinic and the laboratory in our translational research and to apply the insights we obtain in each venue to refine our efforts in the other."*

*Dr. Jedd Wolchok, Meyer Director*

### Swim Across America

Over the past 35 years, Swim Across America charity swims have raised more than \$100 million for research, clinical trials and patient programs at the nation's top cancer institutions to help fight cancer.

The Meyer Cancer Center is honored to partner with Swim Across America to continue advancing research in immunotherapy, personalized medicine, gene sequencing, detection and patient programs. Additionally, the funding supports investigators from underrepresented groups and will continue to address health disparities by developing treatments for cancers that are prevalent in people of African heritage.

"We are grateful for the generous support over the years, first at Memorial Sloan Kettering Cancer Center and now at Weill Cornell Medicine. We cannot emphasize enough the importance of uninterrupted support," said Dr. Taha Merghoub, who leads the Swim Across America Laboratory at the Meyer Cancer Center.



# Home to Award-Winning Researchers

## **Pinkal Desai, M.B., M.P.H.**

Received the Ritu Banga Healthcare Disparities Research Award



## **Silvia Formenti, M.D.**

Received the Ezra Greenspan Award from the Chemotherapy Foundation



## **Iman Hajirasouliha, Ph.D.**

Received the Irma T. Hirschl/Monique Weill-Caulier Research Award



## **Dan Landau, M.D., Ph.D.**

Received the Emerging Leader Award from The Mark Foundation



## **Lisa Newman, M.D.**

Received a Victoria's Secret Global Fund for Women's Cancers 2022 Meritorious Award



## **Lisa G. Roth, M.D.**

Elected to the American Society for Clinical Investigation



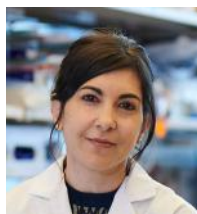
## **David Simon, Ph.D.**

Received the Pershing Square Sohn Prize for Young Investigators in Cancer Research



## **Roberta Zappasodi, Ph.D.**

Received the Breast Cancer Alliance Young Investigator Grant



## **Bishoy Faltas, M.D.**

Received the ASCI Young Physician Scientist Award



## **Matthew Greenblatt, M.D., Ph.D.**

Received the Charles A. Frueauff Foundation Equipment Grant



## **Kevin Holcomb, M.D.**

Received the SHARE's Ann Grant Advocacy Leadership Award



## **David Lyden, M.D., Ph.D.**

Elected to the American Association for the Advancement of Science



## **Joseph Osborne, M.D., Ph.D.**

Named fellow of the American College of Radiology



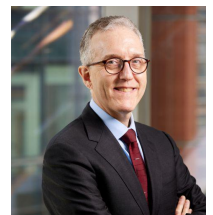
## **Marco Seandel, M.D., Ph.D.**

Received the Alice Bohmfalk Charitable Trust Research Grant



## **Jedd Wolchok, M.D., Ph.D.**

Elected to the American Association for Cancer Research Board of Directors



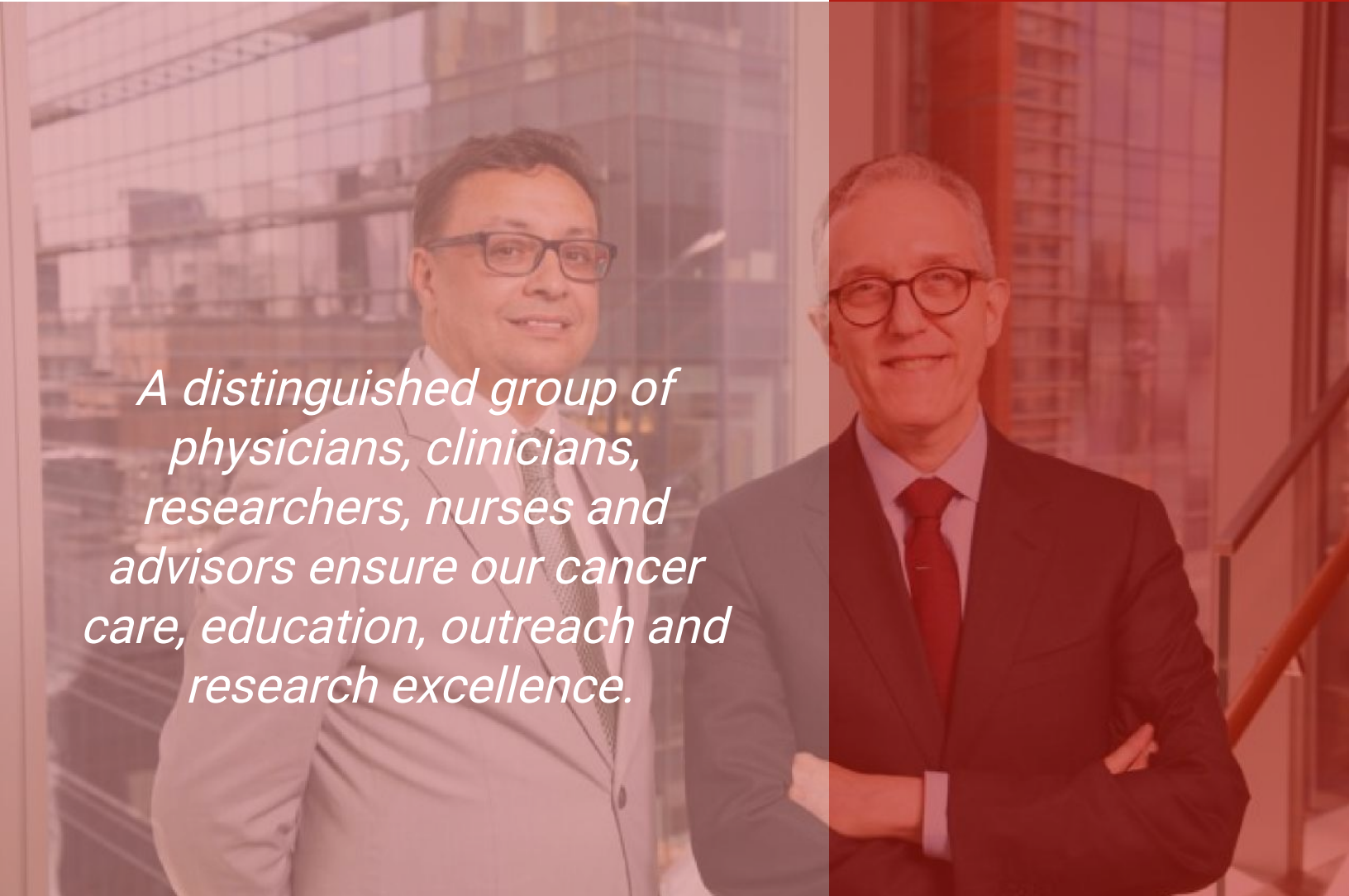
## **Melody Zeng, Ph.D.**

Received the AAI ASPIRE Award



# Leadership that Gets Results

---

A photograph of two men in professional attire standing in front of a modern glass-walled building. The man on the left is wearing a light-colored suit and glasses, while the man on the right is wearing a dark suit and glasses. The image has a red tint overlay.

*A distinguished group of physicians, clinicians, researchers, nurses and advisors ensure our cancer care, education, outreach and research excellence.*

# Leaders Who Inspire

---



**Jedd Wolchok, M.D., Ph.D.**  
**Meyer Director**

*"Every breakthrough study or novel treatment is a step closer to our goal of reducing cancer incidence and finding therapies that benefit our patients."*



**Taha Merghoub, Ph.D.**  
**Deputy Director**

*"With this new role, I have been taken out of my comfort zone and I'm learning a lot. I am very impressed by my colleagues' science and the quality of care they provide."*



**Julie Boyer, Ph.D.**  
**Executive Director, Administration and Strategy**

*"Every day at the Meyer Cancer Center feels new—new challenges, new discoveries, new boundaries to push."*



**John Blenis, Ph.D.**  
**Associate Director, Basic Science**

*"We are an all-inclusive research leadership spearheading profound improvements in detecting and treating cancer among all populations."*



**Silvia Formenti, M.D.**  
**Associate Director, Translational Research**

*"I appreciate the unique opportunity to succeed in resolving gaps in cancer care and survival outcomes."*



**Paraskevi Giannakakou, Ph.D.**  
**Associate Director, Education**

*"Brilliance, talent, dedication, leadership and a collaborative spirit permeate the center workforce, transforming our research into clinical gains for our patients."*



**David Nanus, M.D.,**  
**Associate Director, Network Integration**

*"I enjoy working with highly motivated physicians and staff to build a world-class cancer program that will provide exemplary cancer care and clinical trial access to our Brooklyn and Queens communities."*



**Erica Phillips, M.D.,**  
**Associate Director, Community Outreach and Engagement**

*"I am excited for our team to foster placing marginalized communities at the forefront of research questions and in the approaches used, rather than the after-thought approach generally used in academia."*



**Rulla Tamimi, Sc.D.**  
**Associate Director, Population Science**

*"I'm grateful for this opportunity to help build a population sciences program for the diverse population we serve, and to have exceptional researchers to collaborate with."*



**Manuel Hidalgo Medina, M.D., Ph.D.,**  
**Associate Director, Clinical Services**

*"What I love best is our commitment to developing academic cancer programs in Brooklyn and Queens that will significantly benefit patients in these areas."*



**Massimo Cristofanilli, M.D., Associate Director, Precision Medicine**

*"The collegiality and patient-centered approach to care and research serving a multiethnic and diverse population makes it possible to investigate and implement novel diagnostic technologies."*



**Howard Fine, M.D., Chair, Protocol Review and Monitoring Committee**

*"Working with our clinical team has been both humbling and inspiring. Our teams are brilliant, dedicated and committed to providing our patients with the best possible care."*

# The Administration Team

---

The administrative team meets the needs of senior leadership, research program leadership, shared resources and members. It is a liaison between the Meyer Cancer Center and central institutional and hospital administration.

## **Julie Boyer, Ph.D., Executive Director**

Dr. Boyer reports directly to the center director to oversee all Meyer Cancer Center administrative functions and develop and execute center-wide strategic plans.

## **Jaclyn Jansen, Ph.D., Director of Administration and Innovation**

Dr. Jansen is the key administrator for the NCI designation process, providing strategic oversight for developing and managing center operations and initiatives.

## **Lucie Lu, M.Ed., Program Manager**

Ms. Lu provides strategic input and oversight for the ongoing development of the Meyer Cancer Center initiatives according to NCI guidelines. She oversees research program activities and supports integration across the continuum of the center's initiatives.

## **Bo Wang, Finance Administrator**

Mr. Wang administers the Meyer Cancer Center's funding portfolio, including institutional funds, grants and philanthropy. He works with Dr. Jansen to analyze grant data under the NCI guidelines to ensure data consistency.

## **Maria Alexander, Project Manager**

Ms. Alexander provides a wide range of administrative support for the Meyer Director and the Meyer Cancer Center. She coordinates leadership meetings, retreats and other collaborative meetings, seminars and conferences.

## **Jacquelynn Osoro, Communications Manager**

Ms. Osoro oversees communications across the Meyer Cancer Center, including developing print and digital assets. She works closely with Weill Cornell Medicine's Office of External Affairs, including its communications and development teams.

## **Jayda Shamblee, Administrative Support Specialist**

Ms. Shamblee provides a wide range of administrative support to senior staff across the Meyer Cancer Center. She oversees seminars, research program meetings, retreats and other opportunities for collaboration.

## **Laura Cullem, Administrative Assistant**

Ms. Cullem provides administrative support to several Meyer Cancer Center members and works closely with the team to help with administrative tasks related to finance, events and more.





**Weill Cornell  
Medicine**

**Sandra and Edward  
Meyer Cancer Center**

413 E 69th St  
New York, NY 10021  
[meyercancer.weill.cornell.edu/](http://meyercancer.weill.cornell.edu/)



*Image: Fibroblasts settled on a culture dish, lining up to form a smiley pattern, which was discovered by crystal violet staining.*

*Credit: Dr. Jihye Pak*

*Finalist - inaugural Meyer Cancer Center Scientific Photo Contest*