

A microscopic image of tissue, likely a cross-section of a blood vessel or duct, showing a central lumen surrounded by a thick, multi-layered wall. The tissue is stained with various colors, including red, green, and blue, highlighting different cellular and structural components. A large red circle is overlaid on the image, containing the text "2021-2022 ANNUAL REPORT".

# 2021-2022 ANNUAL REPORT



**Weill Cornell Medicine**  
Sandra and Edward  
Meyer Cancer Center

# Director's Reflection

The past year challenged us all as we emerge from an unrelenting pandemic that disrupted how we live and work. We are immensely proud of the resilience, flexibility and professionalism of our faculty, students and staff, who have stayed focused on delivering life-changing cancer research and care to our patients.

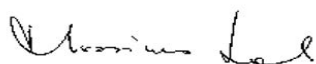
Dr. Lewis Cantley stepped down from his role as the Sandra and Edward Meyer Director in November 2021. We are grateful for his eight years of leadership that led to tremendous growth of the Sandra and Edward Meyer Cancer Center, and we wish him all the best.

As we prepare to welcome our new director, Dr. Jedd Wolchok, I am honored to serve as interim director. My commitment is to ensure that the Meyer Cancer Center remains a vibrant and inclusive place for cancer research, supported by new initiatives that facilitate clinical, basic, and population-based work.

This year, we have seen our outstanding scientists and clinicians continue to make groundbreaking discoveries that are being translated to elevate patients' standard of care. We have also continued to increase outreach and service among communities that have been historically underserved. In fact, we've seen significant growth in clinical trial accruals at both NewYork-Presbyterian Queens and NewYork-Presbyterian Brooklyn Methodist Hospital.

Philanthropy is the foundation that enables this transformative research and cutting-edge care. I thank you for your continued support and participation in the year ahead, as we work together to change the standard of cancer care.

With respect,



Massimo Loda, M.D.  
David D. Thompson Professor of Pathology  
Meyer Cancer Center Interim Director



"This year, we have seen our outstanding scientists and clinicians continue to make groundbreaking discoveries that are being translated to elevate patients' standard of care."



# Senior Leadership

The Senior Leadership Committee is the central decision-making body for all strategic and programmatic initiatives at the Meyer Cancer Center. Committee members work to encourage research productivity, facilitate collaboration, promote innovation, and leverage institutional strengths and unique scientific opportunities.



**Massimo Loda, M.D.**  
David D. Thompson  
Professor of Pathology  
Director (Interim)



**Howard Fine, M.D.**  
Louis and Gertrude Feil Professor of Medicine  
Chair, Protocol Review and Monitoring  
Committee



**Manuel Hidalgo Medina, M.D., Ph.D**  
Walter B. Wriston Professor of Pancreatic  
Cancer Research  
Associate Director, Clinical Services



**John Blenis, Ph.D.**  
Anna-Maria and Stephen Kellen Professor in  
Cancer Research  
Associate Director, Basic Science



**Silvia Formenti, M.D.**  
Sandra and Edward Meyer Professor of Cancer  
Research  
Associate Director, Translational Research



**David M Nanus, M.D.**  
Mark W. Pasmantier Professor of  
Hematology and Oncology in Medicine  
Associate Director, Network Integration



**Julie Boyer, Ph.D.**  
Executive Director,  
Administration & Strategy



**Giuseppe Giaccone, M.D.**  
Associate Director,  
Clinical Research



**Erica Phillips, M.D.**  
Jack Fishman Professor of Cancer  
Prevention  
Associate Director, Community Outreach &  
Engagement



**Massimo Cristofanilli, M.D.**  
Associate Director,  
Precision Medicine



**Evi Giannakakou, Ph.D.**  
Associate Director,  
Education



**Rulla Tamimi, Sc.D.**  
Associate Director,  
Population Science

# Administration

The administrative team meets the needs of senior leadership, research program leadership, shared resources, and members, and serves as a liaison between the Meyer Cancer Center and central institutional and hospital administration. The team's responsibilities include coordination of faculty recruitment and onboarding; management of the center's finances and other resources, including space; planning and coordination of research program activities; coordination of support and reporting for the Meyer Cancer Center's shared resources; and internal and external communications.

## Julie Boyer, Ph.D., Executive Director of Administration & Strategy

Dr. Boyer reports directly to the center director to oversee all administrative functions of the Meyer Cancer Center and develop and execute center-wide strategic plans.

## Jaclyn Jansen, Ph.D., Assistant Director of Administration

Dr. Jansen serves as the key administrator for the NCI designation process, providing strategic oversight for development, and management of center operations and initiatives.

## Lucie Lu, M.Ed., Program Manager

Ms. Lu provides strategic input and oversight for the ongoing development of the Meyer Cancer Center initiatives according to NCI guidelines. She oversees research program activities and supports integration across the continuum of the center's initiatives.

## Bo Wang, Finance Administrator

Mr. Wang is responsible for the administration of the Meyer Cancer Center's funding portfolio, including institutional funds, grants, and philanthropy. He works with Dr. Jansen to analyze grant data under the NCI guidelines to ensure data consistency.

## Jacquelynn Osoro, Communications Manager

Ms. Osoro oversees communications across the Meyer Cancer Center, including the development of print and digital assets. She works closely with divisions in Weill Cornell Medicine's External Affairs including communications and development.

## Jessica Khoury, Administrative Coordinator

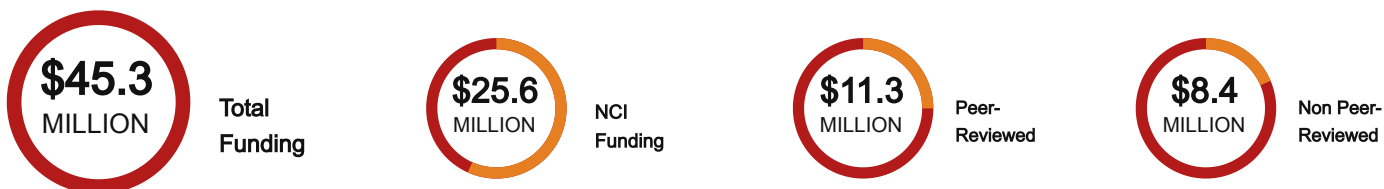
Ms. Khoury provides a wide range of administrative support to senior staff across the Meyer Cancer Center. She oversees seminars, research program meetings, retreats, and other opportunities for collaboration.

# A Snapshot of Research Activity

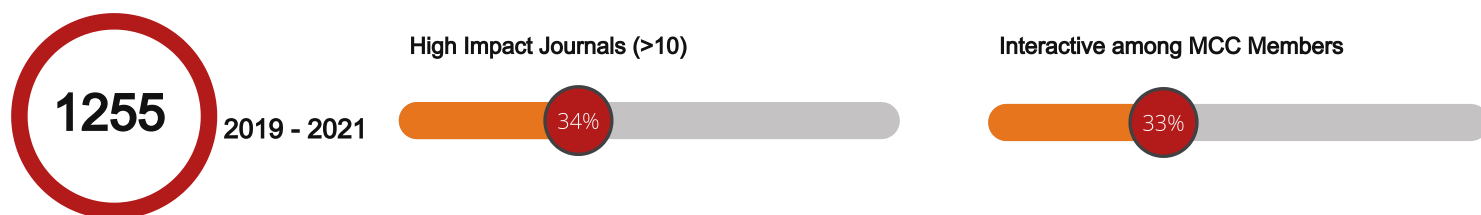
The 143 core Meyer Cancer Center members are divided among four research programs based on common research interests: **Cancer Biology**, **Cancer Genetics and Epigenetics**, **Experimental Therapeutics** and **Cancer Prevention and Control**. The goal of each program is to stimulate the exchange of ideas and to nucleate collaborations across the center. Senior leadership has appointed outstanding leaders to each program. These leaders are responsible for reviewing program membership, facilitating interactions among members, and advocating for the needs of their members, including equipment, education and other resources.

Below, we are pleased to share with you data on grants received, publications, and clinical research accruals.

## Grants (Cancer-Focused Direct Cost)



## Publications



## Clinical Research and NYP/WCMC



New Cancer  
Diagnosis or Patients  
Receiving Treatment

# Cancer Biology Program

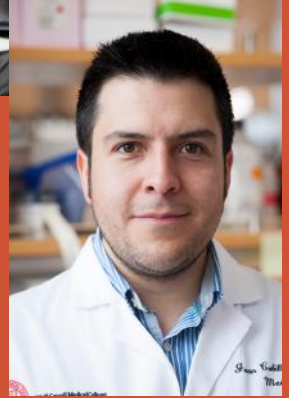
The Cancer Biology program integrates cellular, molecular and bio-medical engineering approaches to investigate basic mechanisms of interaction between malignant cells and their microenvironment. The program explores pre-clinical and clinical models of several cancers -- including breast, lung, colorectal, pancreatic, ovarian, lymphoma, glioblastoma and melanoma, as well as therapeutic resistance, immunology and immunotherapy.

The program's co-leaders are Drs. Tim McGraw and Juan Cubillos-Ruiz. Dr. McGraw is a cell biologist who is internationally known for his work on the biochemical pathways that regulate the trafficking of glucose transporters to and from the plasma membrane in both healthy and tumor cells. Dr. Cubillos-Ruiz has over 15 years of research experience in immunology and immunotherapy. He has developed new strategies to induce anti-cancer immunity and his work on abnormal Endoplasmic Reticulum (ER) stress responses has provided the scientific foundation for new approaches to enhance cancer immunotherapy.

## Leaders



**Tim McGraw, Ph.D.**  
Professor of Biochemistry



**Juan Cubillos-Ruiz, Ph.D.**  
Associate Professor of Microbiology and Immunology in  
Obstetrics and Gynecology

105

## Published Journal Articles in 2021

### **T Cell Behavior Determines Which Tumors Respond to Treatment**

When immune cells called T lymphocytes infiltrate malignant tumors, the genetic program of those T cells and the developmental path they then follow may affect their response to immunotherapy and predict overall patient survival, according to a new study by Meyer Cancer Center member Dr. Niroshana Anandasabapathy, associate professor of dermatology, and her co-investigators. The results overturn the prevailing model of immune responses in melanoma and present different therapeutic approaches. (Cancer Cell 2022, In press.)

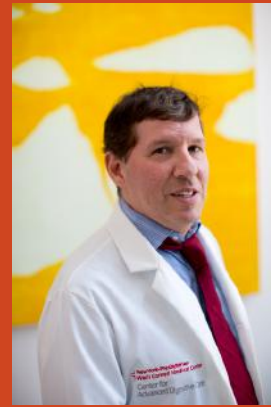
### **Immune Therapy Targets Cells that Cause Leukemia Relapse**

Genetically engineered immune cells successfully target the specific cancer cells that may be responsible for relapse of acute myeloid leukemia (AML), a type of blood cancer, and proved effective in animal models of the disease, according to a preclinical study led by Meyer Cancer Center members, Dr. Monica Guzman, associate professor of pharmacology in medicine, and Dr. Gail Roboz, professor of medicine. The new cell therapy, now being tested in phase 1 clinical trials, may help patients with AML to remain cancer-free. (Nature Communications, April 2022.)

# Cancer Genetics & Epigenetics Program

The Cancer Genetics and Epigenetics program contributes to the fundamental understanding of cancer-related genetic mutations and epimutations that fuel cancer development and progression. Long-term, the program looks to translate this knowledge into new oncology diagnostics and therapeutic targets. The program is co-led by Drs. Steven Lipkin and Ekta Khurana. Dr. Lipkin's research focuses on cancer predisposition gene mutations, mechanisms of tumorigenesis and immuno-prevention in patients with germline mutations. Dr. Khurana researches the role of genomic and epigenomic variation in disease, in particular cancer.

## Leaders



**Steven Lipkin, M.D., Ph.D.**  
Professor of Medicine  
Gladys and Roland Harriman Professor of Medicine  
Professor of Genetic Medicine



**Ekta Khurana, Ph.D.**  
Associate Professor of Physiology and Biophysics  
Associate Professor of Computational Genomics in Computational Biomedicine  
WorldQuant Foundation Research Scholar

137

## Published Journal Articles in 2021

### **New Cancer Subtype May Illuminate Treatment Strategy**

Dr. Khurana and co-investigators, including Meyer Cancer Center members Drs. Juan Miguel Mosquera, Cora Sternberg and Andrea Sboner, have identified a previously unrecognized form of hormone therapy-resistant prostate cancer, as well as a set of molecules that drive its growth. This discovery opens the door to the development of therapies that treat this specific disease. (Science, May 2022.)

### **Powerful Technique Details Brain Tumors' Formidable Resiliency**

Meyer Cancer Center member Dr. Dan Landau, associate professor of physiology and biophysics and of medicine, and a team of researchers at Weill Cornell Medicine, the New York Genome Center, Harvard Medical School, Massachusetts General Hospital and the Broad Institute of MIT and Harvard profiled in unprecedented detail thousands of individual cells sampled from patients' brain tumors. The findings, along with the methods developed to obtain those findings, represent a significant advancement in cancer research, and ultimately may lead to better ways of detecting, monitoring and treating cancers. (Nature Genetics, September 2021.)

### **Antibody-Producing B Cells May be "Predestined" for Their Fates**

The master regulator behind the development of antibody-producing cells has been identified in a study by Meyer Cancer Center members Dr. Ari Melnick, the Gebroe Family Professor of Hematology-Oncology, and Dr. Olivier Elemento, director of the Englander Institute for Precision Medicine, and co-investigators. The findings provide new insight into the inner workings of the immune system and may help researchers understand how tissues develop and how certain cancers arise. (Nature Immunology, September 2021.)



# Experimental Therapeutics Program

Members of the Experimental Therapeutics program advance cancer therapeutics through innovative investigator-initiated clinical trials that leverage important and potentially transformative discoveries made by fellow Meyer Cancer Center members. Clinical trials in this program are designed to address the needs of the regional community, with a particular emphasis on health disparities due to race, ethnicity, and gender. The program is co-led by Drs. Nasser Altorki and Scott Tagawa. Dr. Altorki is an internationally renowned thoracic surgical oncologist who focuses on lung and esophageal cancers. He has designed and led several investigator-initiated windows of opportunity studies--trials in which patients receive one or more new compounds between their cancer diagnosis and standard treatment--in lung and esophageal cancers. Dr. Tagawa has developed radiolabeled monoclonal antibody therapies against prostate-specific membrane antigen (PSMA) and leads clinical trials in prostate, renal (kidney), and urothelial (bladder) cancers.

## Leaders



**Nasser Altorki, M.D.**

David B. Skinner, M.D. Professor of Thoracic Surgery  
Professor of Cardiothoracic Surgery



**Scott Tagawa, M.D.**

Professor of Medicine Professor of Medicine in Urology

257

## Published Journal Articles in 2021

### How Fructose in the Diet Contributes to Obesity

Eating fructose appears to alter cells in the digestive tract in a way that enables it to take in more nutrients, according to a preclinical study by Meyer Cancer Center member Dr. Marcus DaSilva Goncalves, the Ralph L. Nachman, M.D. Research Scholar and assistant professor of medicine and biochemistry, and co-investigators, including Meyer Cancer Center members Drs. Manish Shah, Lukas Dow and Lewis Cantley. These changes could help to explain the well-known link between rising fructose consumption around the world and increased rates of obesity and certain cancers. (Nature, August 2021.)

### Combination Therapy Boosts Lung Cancer Patients' Response, Cuts Treatment Time in Phase 2 Trial

Combining immunotherapy with targeted radiation resulted in a greater response rate than immunotherapy alone in a phase 2 clinical trial in patients with early-stage, non-small-cell lung cancer led by Dr. Altorki, in collaboration with Meyer Cancer Center members Drs. Timothy McGraw, Alain Borczuk, Ashish Saxena, Jeffrey L Port, Brendon Stiles, Nicholas Sanfilippo, Ronald Scheff, Bradley Pua, James Gruden, Paul Christos, Olivier Elemento, Karla Ballman, and Silvia Formenti. (Lancet Oncology, May 2021.)



# Cancer Prevention & Control Program

The Cancer Prevention and Control program aims to understand the determinants of cancer incidence, morbidity, and mortality across the cancer care continuum and developing and disseminating prevention/intervention strategies to reduce morbidity and mortality from cancer in the community. Given the diversity in our catchment area, research addressing health literacy, developing more culturally sensitive interventions, and improving health equity for all are priorities for the developing program. Activities in 2021 were focused on faculty recruitment to expand the program, which now features 20 R01 grants from 24 investigators and meets the NCI criteria for a formal research program.

The program is led by Dr. Rulla Tamimi, an internationally recognized cancer and molecular epidemiologist. Her previous experience includes leadership on the Nurses' Health Studies and work in identifying genetic and lifestyle predictors for breast cancer risk and survival.

## Leader



**Rulla Tamimi, Sc.D.**

Professor of Population Health Sciences  
Professor of Epidemiology in Pathology and  
Laboratory Medicine

95

## Published Journal Articles in 2021

### **Cancer and Cardiovascular-Related Perceived Risk in the MCC Catchment Area**

In a study to determine the association between risk perception for cancer and cardiovascular disease, Dr. Laura Pinheiro, assistant professor of health services research in medicine and of population health sciences, in collaboration with Meyer Cancer Center colleagues Drs. Tamimi, David Nanus and Erica Phillips, found that perceiving greater risk was associated with a 14% lower likelihood of engaging in healthy behaviors. (Cancer Causes Control, May 2022.)

### **Cell Therapy May Prevent Infections in Leukemia Patients**

Treatment with a ready-made preparation of human immune cells helps prevent infections in people whose immune systems are temporarily weakened by leukemia treatment, according to a phase 2 clinical trial led by Dr. Pinkal Desai, the Charles, Lillian and Betty Neuwirth Clinical Scholar in Oncology and assistant professor of medicine, and co-investigators. Infections are a significant problem in patients undergoing chemotherapy for cancer. (Journal of Clinical Oncology, July 2021.)

### **Less Prostate Cancer Screening Reduces Overdiagnosis but May Miss Aggressive Cases**

Over the past 15 years, public health authorities have downgraded recommendations for the prostate-specific antigen (PSA) test as a screening tool to reduce the overdiagnosis and overtreatment of men with low-grade prostate cancer. Dr. Jim Hu, the Ronald P. Lynch Professor of Urologic Oncology, and his collaborators, including Meyer Cancer Center member Dr. Himanshu Nagar, found that while these efforts have been effective, the incidence of higher-grade disease and metastasis at diagnosis have risen. (Journal of the National Cancer Institute, March 2022.)

## Cancer Prevention and Control Program

**Grant Ellsworth, M.D.**

Assistant Professor of Medicine

**Yiwey Shieh, M.D.**

Assistant Professor of Population Health Sciences

**Shoshana Rosenberg, Sc.D.**

Assistant Professor of Population Health Sciences

**Kevin Kensler, Sc.D.**

Assistant Professor of Population Health Sciences

## Experimental Therapeutics Program

**Jonathan Villena-Vargas, M.D.**

Assistant Professor of Clinical Cardiothoracic Surgery

**Pashtoon Kasi, M.D.**

Assistant Professor of Medicine, Interim

**Barbara Ma, M.D.**

Assistant Professor of Medicine

**Ariel Marciscano, M.D.**

Assistant Professor of Radiation Oncology

**Jones Nauseef, M.D.**

Assistant Professor of Medicine

## Cancer Biology Program

**Jacob Geri, Ph.D.**

Assistant Professor of Pharmacology

**Tobias Meyer, Ph.D.**

Joseph C. Hinsey Professor  
Professor of Cell and Developmental Biology

**Luigi Marchionni, Ph.D.**

Associate Professor of Pathology and Laboratory  
Medicine

**Despina Siolas, M.D., Ph.D.**

Assistant Professor of Medicine

## Cancer Genetics & Epigenetics Program

**Mark Bustoros, M.D.**

Assistant Professor of Medicine

# Community Outreach and Engagement

The Community Outreach and Engagement (COE) program's catchment area (where Meyer Cancer Center's patients reside) is home to over 6 million individuals across 38 distinct neighborhoods in Brooklyn, Manhattan, and Queens. The community is one of the world's most linguistically and ethnically diverse.

The office is led by Dr. Erica Phillips, whose research includes three intersecting areas: (a) developing behavioral interventions to address obesity as a modifiable risk factor for cancer, (b) formative qualitative and quantitative research to understand the social determinants that drive differences in morbidity and mortality between certain racial/ethnic groups, and (c) incorporating strategies and tools grounded in the principles of community-engaged research into larger scientific programs to address health disparities.

## Leader



**Erica Phillips, M.D., M.S.**  
Jack Fishman Professor of Cancer Prevention  
Associate Director, Community Outreach & Engagement

## 2021 Program Highlights

### **Faith-Based Health Promotion Programs Increase Adherence to Ideal Health Behaviors**

This study aimed to measure the individual-level change in three categories of shared risk behaviors between cardiovascular disease and cancer (body weight, physical activity, and nutrition) among program participants. Meyer Cancer Center member Dr. Erica Phillips and co-investigators found that the percentage of participants meeting diet and exercise recommendations significantly increased with the completion of the program. (Journal of Religion and Health, April 2022.)

### **Standardizing Patient Navigation**

Office of Community Outreach and Engagement has spearheaded efforts to standardize patient support across all four hospitals affiliated with Weill Cornell Medicine. These efforts were catalyzed by grants from the Leukemia and Lymphoma Society and Genetech to Drs. Erica Phillips and John Leonard. The research team will receive a combined total of \$1.3 million over five years to establish the Blood Cancer Research Initiative Developing Greater Engagement with Community Patients (BRIDGE) program, which is now being expanded to include other disease sites. Patient navigators will offer one-on-one assistance to patients considering participation in clinical trials, such as making sure patients requiring transportation to NewYork-Presbyterian/Weill Cornell in Manhattan have access to a fund for trial-related expenses.

### **Community Stakeholders Identify the Top Three Social Determinants of Health**

Community stakeholders identified economic stability, education, and community and social context as priorities for which tailored screening and practical solutions could be implemented within our health care system. This study provided Meyer Cancer Center member Dr. Erica Phillips and colleagues with insight into the actual types of interventions and resources that communities expect from the health care sector. (Ethnicity and Disease. Winter 2021.)

# Director's Seminar Series

The monthly Director's Seminar Series features presentations from external speakers on a wide variety of clinical, basic, translational and population-based cancer research topics. To incorporate topics of broad interest, suggestions for speakers are solicited from the members of each research program.

## Spectrum of Evolutionary Trajectories in Pancreatic Cancer

**Christine Iacobuzio-Donahue, M.D., Ph.D.**

*David M. Rubenstein Center Chair for Pancreatic Cancer Research  
Director, Center for Pancreatic Cancer Research  
Memorial Sloan Kettering Cancer Center*

## Role of Autophagy in Cancer Metabolism and Immune Tolerance

**Eileen White, Ph.D.**

*Deputy Director  
Associate Director for Basic Science  
Rutgers Cancer Institute  
Distinguished Professor Molecular Biology and Biochemistry  
Rutgers University*

## Overcoming Resistance to Immunotherapy: Targeting Innate Immune Cells

**Nina Bhardwaj, M.D., Ph.D.**

*Professor, Medicine, Hematology and Medical Oncology  
Professor, Urology  
Icahn School of Medicine and Mount Sinai*

## Overview of Oncologic Pathology Shared Resources

**Brian D. Robinson, M.D.**

*Associate Professor of Pathology in Urology  
Associate Professor of Pathology and Laboratory Medicine  
Weill Cornell Medicine*

## Evaluating the Role of Obesity in Breast Cancer Among Minority and Medically Underserved Populations

**Elisa Bandera, M.D., Ph.D.**

*Professor and Chief, Cancer Epidemiology and Health Outcomes  
Co-Leader, Cancer Prevention and Control Program  
Rutgers Cancer Institute of New Jersey  
Professor of Medicine and Epidemiology  
Robert Wood Johnson Medical School and Rutgers School of Public Health*

**Sanjay S. Patel, M.D., MSc., M.P.H.**

*Assistant Professor of Pathology and Laboratory Medicine  
Weill Cornell Medicine*

## The Impact of Heterogeneity in Cancer Genome Science

**John D. Carpten, Ph.D.**

*Professor and Chair of Translational Genomics  
Director, Institute of Translational Genomics  
Royce and Mary Trotter Chair in Cancer Research  
Keck School of Medicine of USC  
University of Southern California*

## New Treatment Approaches for EGFR Mutant Lung Cancer

**Pasi A. Jänne, M.D., Ph.D.**

*Director, Lowe Center for Thoracic Oncology  
Director, Belfer Center for Applied Cancer Science  
Director, Che-Huang Center for EGFR Mutant Lung Cancers  
Professor of Medicine  
Senior Physician  
Harvard Medical School*



# Research Program Meetings

The monthly Research Program meetings host internal speakers. They have become an excellent platform for Meyer Cancer Center members in each research program to share scientific findings and identify potential collaborators.

## Copper-Mediated Metabolic Reprogramming in Breast Cancer Metastasis

**Vivek Mittal, Ph.D.**

*Ford-Isom Research Professor of Cardiothoracic Surgery  
Professor of Cell and Developmental Biology in Cardiothoracic Surgery  
Professor of Cell and Developmental Biology*

## Mechanisms of Stromal Reprogramming and Heterogeneity in Mesenchymal Colorectal Cancer

**Jorge Moscat, Ph.D.**

*Vice-Chair for Experimental Pathology  
Professor of Pathology and Laboratory Medicine  
Homer T. Hirst III Professor of Oncology in Pathology*

## Novel Pathways for Malignant Transformation Revealed by Onco-linker Histone Mutations

**Ari Melnick, M.D.**

**Professor of Medicine**

*Gebroë Family Professor of Hematology-Oncology*

## Cancer Immunoprevention Early Detection

**Steven Lipkin, M.D., Ph.D.**

*Professor of Medicine  
Gladys and Roland Harriman Professor of Medicine  
Professor of Genetic Medicine  
Co-Leader, Cancer Genetics & Epigenetics Research Program  
Sandra and Edward Meyer Cancer Center*

## Clonal Hematopoiesis and Hematologic Malignancies: Lessons from Population Studies

**Pinkal Desai, M.D., M.P.H.**

*Assistant Professor of Medicine  
Charles, Lillian, and Betty Neuwirth Clinical Scholar in Oncology  
Clinical Director EIPM Molecular Aging Initiative*

## Racial Disparities in the Management of Patients with Multiple Myeloma

**Jorge Monge, M.D.**

*Assistant Attending Physician, NewYork-Presbyterian Hospital  
Weill Cornell Medical Center  
Assistant Professor of Medicine*

## Metabolic Vulnerabilities in Prostate Cancer

**Maria T. Diaz-Meco, Ph.D.**

*Homer T. Hirst III Professor of Oncology in Pathology  
Professor of Pathology and Laboratory Medicine*

## Hungry for a Cure: How a Hunger Hormone May Hold the Key to Treating Resistant or Aggressive Breast Cancers

**Kristy A. Brown, Ph.D.**

*Associate Professor of Biochemistry in Medicine*

## Understanding the Immune Microenvironment and its Association with Efficiency

**Manish A. Shah, M.D., FASCO**

*Professor of Medicine  
Bartlett Family Professor in Gastrointestinal Oncology  
Weill Cornell Medicine*

## Immunosuppressive T Cells in Cancer Immunotherapy Resistance

**Roberta Zappasodi, Ph.D.**

*Assistant Professor of Hematology in Medicine  
Parker Bridge Scholar, Parker Institute for Cancer Immunotherapy*

**Doron Betel, Ph.D.**

*Assistant Professor of Computational Biomedicine Research in Medicine  
Assistant Professor of Research in Computational Biomedicine*

# Faculty Awards and Recognition

**Eftychia Apostolou, Ph.D., B.Sc.**

Endowed Research Scholar Award, Renewed



**Marcin Imielinski, M.D., Ph.D.**

Received the Pershing Square Sohn Cancer Research Prize



**Rohit Chandwani, M.D., Ph.D.**

Appointed the Mildred L. and John F. Rasweiler Research Scholar in Cancer Research



**David C. Lyden, M.D., Ph.D.**

Elected to the Association of American Physicians



**Lukas Edward Dow, Ph.D., B.Sc.**

Received the Emerald Foundation Distinguished Investigator Award



**Matthew Greenblatt, M.D., Ph.D.**

Elected to the American Society for Clinical Investigation



**Bishoy Faltas, M.B., B.Ch.**

Received the ASCI Young Physician Scientist Award



**Robert Schwartz, M.D., Ph.D.**

Elected to the American Society for Clinical Investigation



# Sandra and Edward Meyer Professorship of Cancer Research

## Financial Information

As of May 2022, Weill Cornell Medicine's overall endowment pool had a market value of \$2.02 billion, from which we received \$61.8 million in investment income for our programs, faculty and students in fiscal year 2022.

Listed below is financial information on the endowed fund you made possible at Weill Cornell Medicine. All numbers are rounded to the nearest dollar.

## Endowed Funds You Made Possible at Weill Cornell Medicine

Fund Name	Book Value (as of May 2022)	Market Value (as of May 2022)	Investment Income FY 2022
<i>Sandra and Edward Meyer Professorship of Cancer Research</i>	\$3,206,835	\$4,467,158	\$139,835



Dr. Silvia Formenti, the Sandra and Edward Meyer Professor of Cancer Research since 2015, remains grateful for this professorship which enables her to devote protected time to cancer research, distinct from her many clinical, educational and administrative commitments.

A prolific researcher, Dr. Formenti has published over 190 papers recognized by high impact journals like JAMA, Lancet Oncology and Journal of Clinical Oncology.

It is Dr. Formenti's true honor and pleasure to link the many achievements of her team to the Meyer Professorship.

We are pleased to outline highlights of Dr. Formenti's work in the past year on the following page.

### **Silvia Formenti, M.D.**

Sandra and Edward Meyer Professor of Cancer Research

Chairman of the Department of Radiation Oncology at Weill Cornell Medicine

Associate Director of Translational Research at the Meyer Cancer Center

Radiation Oncologist-in-Chief at NewYork-Presbyterian

# Dr. Silvia Formenti's Awards, Honors, Publications, Presentations and Grants

The grant proposal titled “Radiotherapy to Jump-Start Cancer Response to Immunotherapy,” of which Dr. Formenti is the principal investigator, has been selected for funding by the National Institutes of Health (NIH) and the National Cancer Institute (NCI). This large, multi-institutional grant will bring together three U54 Research Centers to form the Radiation Oncology-Biology Integration Network (ROBIN). The cadre of ROBIN Centers created through this funding will establish an agile and effective national radiation oncology network infrastructure that collectively addresses critical hypothesis-based translational research knowledge gaps on the biological basis of responses in cancer patients who undergo radiation treatments.

In April 2022, Dr. Formenti was honored as she was named a fellow of the American College of Radiology (ACR). ACR fellows demonstrate a history of service to the college, organized radiology, teaching, and/or research. The fellowship is awarded to members of the college in good standing who have demonstrated service to ACR; evidenced significant accomplishments in scientific or clinical research in the field of radiology; made significant contributions to literature; and/or provided outstanding work as a teacher of radiology. This is one of the highest honors the ACR can bestow on a member. Only 15 percent of current college members have been awarded this honor.

Dr. Formenti and her longtime collaborator, Dr. Sandra Demaria, professor of radiation oncology and of pathology and laboratory medicine, were awarded the Team Science Award from the Society for Immunotherapy of Cancer (SITC). This prestigious award recognizes teams of scientists that have made a long-standing contribution in energy, activity, and success to the field of cancer immunotherapy.

Additionally, Dr. Formenti was again named to Castle Connolly's Top Doctors in 2022.

## Future Goal

**In the coming year, Dr. Formenti and her team plan to submit a proposal for a multi-disciplinary, multi-institutional SPORE (Specialized Programs of Research Excellence) grant. The hypothesis of the Weill Cornell Medicine SPORE in radiation therapy (RT) and immunotherapy (IT) is that focal RT in combination with IT can immunize patients against their cancer, hence delaying disease progression and increasing overall survival.**



# Meyer Cancer Center Media Select Coverage

## July 2021–June 2022

### OncoLive

#### [Dr. Martin on the Role of Maintenance Therapy with Rituximab in MCL](#)

July 16, 2021

• Dr. Peter Martin, the Richard A. Stratton Associate Professor in Hematology and Oncology, associate professor

### MD /alert

#### [Video: Addition of Radiotherapy to Durvalumab Treatment Effective for Early-Stage NSCLC](#)

September 7, 2021

• Dr. Nasser K. Altorki, director of the division of thoracic surgery, the David. B. Skinner, M.D. Professor of Thoracic Surgery, professor of cardiothoracic surgery

### OncoLive

#### [Tagawa Breaks Down FGFR Testing and the Use of Erdafitinib in Bladder Cancer](#)

November 9, 2021

• Dr. Scott T. Tagawa, professor of medicine, professor of medicine in urology

### Bloomberg

#### [The Next Life-Saving Innovation in Medicine May Be Developed Only for You](#)

March 7, 2022

- Dr. Augustine M.K. Choi, the Stephen and Suzanne Weiss Dean and Provost for Medical Affairs
- Dr. Massimo Loda, chairman of pathology and laboratory medicine, the David D. Thompson Professor of Pathology
- Dr. Olivier Elemento, director of the Englander Institute for Precision Medicine, professor of physiology and biophysics, professor of computational genomics in computational biomedicine, professor of computational genomics in pathology and laboratory medicine
- Dr. Alexandros Sigaras, assistant professor of research in physiology and biophysics, assistant professor of research in computational biomedicine
- Dr. Zev Rosenwaks, executive director, women's service center, institute for reproductive medicine, the Revlon Distinguished Professor of Reproductive Medicine in Obstetrics and Gynecology, professor of reproductive medicine, professor of obstetrics and gynecology
- Dr. Nikica Zaninovic, associate professor of embryology in clinical obstetrics and gynecology, associate professor of embryology in clinical reproductive medicine

### Genetic Engineering & Biotechnology News (GEN)

#### [Potential Therapeutic Target May Give Immunotherapy a Boost](#)

March 17, 2022

• Dr. Timothy E. McGraw, professor of biochemistry, professor of biochemistry in cardiothoracic surgery

### ETHealthworld.com

#### [Tumours Change Their Metabolism to Spread More Effectively: Study](#)

March 17, 2022

• Dr. John Blenis, the Anna-Maria and Stephen Kellen Professor in Cancer Research, professor of pharmacology

### OncoLive

#### [ODAC Unanimously Votes to Recommend Randomized Data for Approval of PI3K Inhibitors in Hematologic Cancers](#)

April 22, 2022

• Dr. Massimo Cristofanilli, assistant professor of medicine (interim)

#### [FDA Panel Puts PI3K Inhibitors for Blood Cancers on Notice](#)

April 25, 2022

• Dr. Massimo Cristofanilli, assistant professor of medicine (interim)

### Genetic Engineering & Biotechnology News

#### [Cell Division Insights May Lead to Novel Cancer Therapies](#)

May 5, 2022

• Dr. Tobias Meyer, the Joseph Hinsey Professor in Cell & Developmental Biology, professor of cell and developmental biology, professor of biochemistry

# Meyer Cancer Center Faculty Members in the News (Select) | July 2021–June 2022

## Cancer Network

### [Durvalumab with Radiotherapy Leads to Higher Response Rates in Early-Stage NSCLC](#)

July 2, 2021

• Dr. Nasser K. Altorki, director of the division of thoracic surgery, the David. B. Skinner, M.D. Professor of Thoracic Surgery, professor of cardiothoracic surgery

## The Asco Post

### [Sacituzumab Govitecan-hziy in Urothelial Carcinoma Progressing After Platinum-Based Chemotherapy and Checkpoint Inhibitor Therapy](#)

July 13, 2021

• Dr. Scott T. Tagawa, professor of medicine, professor of medicine in urology

## CURE

### [A Smart Bomb for Prostate Cancer](#)

September 13, 2021

Drs. Neil Bander and Scott Tagawa discuss that after decades of research, scientists are getting

- Dr. Neil H. Bander, the Bernard and Josephine Chaus Professor of Urological Oncology, professor of urology
- Dr. Scott T. Tagawa, professor of medicine, professor of medicine in urology

## Physician's Weekly

### [Pelvic Nodal Metastases: Positive 68Ga-PSMA-11 PET Reliable but has High False-Negative Rate](#)

September 20, 2021

• Dr. Joseph R. Osborne, professor of radiology

## Genetic Engineering & Biotechnology News (GEN)

### [Cancer Treatment Could Be Improved by Activated Club Cells](#)

September 21, 2021

- Dr. Nasser K. Altorki, director of the division of thoracic surgery, the David. B. Skinner, M.D. Professor of Thoracic Surgery, professor of cardiothoracic surgery
- Dr. Ding Cheng Gao, associate professor of cell and developmental biology in cardiothoracic surgery
- Dr. Vivek Mittal, Ford-Isom Research Professor of Cardiothoracic Surgery, professor of cell and developmental biology in cardiothoracic surgery

## Reuters Health

### [Extent of Lymphadenectomy Predicts Survival in Esophageal Cancer](#)

September 30, 2021

• Dr. Nasser K. Altorki, director of the division of thoracic surgery, the David. B. Skinner, M.D. Professor of Thoracic Surgery, professor of cardiothoracic surgery

## Urology Times

### [Dr. Tagawa on Treatment Patterns and Survival in mCSPC](#)

October 18, 2021

Dr. Scott T. Tagawa, professor of medicine, professor of medicine in urology

## The Washington Post

### [Prolonged Grief Disorder Recognized as Official Diagnosis. Here's What to Know About Chronic Mourning.](#)

October 21, 2021

• Dr. Holly G. Prigerson, The Irving Sherwood Wright Professor in Geriatrics II, professor of sociology in medicine

## Targeted Oncology

### [Adding Eryaspase to Chemotherapy Show No OS Benefit in Advanced Pancreatic Cancer](#)

October 26, 2021

• Dr. Manuel Hidalgo Medina, chief of the Division of Hematology and Medical Oncology, the Walter B. Wriston Professor of Pancreatic Cancer Research, professor of medicine

# Meyer Cancer Center Faculty Members in the News (Select) | July 2021–June 2022

## OncoLive

### [Eryaspase/Chemo Misses OS End Point in Second-Line Pancreatic Cancer, But Warrants Further Investigation](#)

October 26, 2021

- Dr. Manuel Hidalgo Medina, chief of the Division of Hematology and Medical Oncology, the Walter B. Wriston Professor of Pancreatic Cancer Research, professor of medicine

## Healio

### [SITC Presents Annual Awards Highlighting Achievements in Cancer Immunotherapy](#)

November 12, 2021

- Dr. Silvia C. Formenti, chair of radiation oncology, the Sandra and Edward Meyer Professor of Cancer Research, professor of medicine
- Dr. Sandra Demaria, professor of radiation oncology, professor of pathology and laboratory medicine

## Targeted Oncology

### [Teplotinib Effective for MET+ NSCLC Found by Tissue or Liquid Biopsy](#)

November 16, 2022

- Dr. Giuseppe Giaccone, professor of medicine, professor of medicine in cardiothoracic surgery

## Oncology - CancerNetwork

### [Hidalgo Medina, MD, PhD, Discusses the Use of Motixafortide/Pembrolizumab and FOLFIRI in PDAC](#)

November 17, 2021

- Dr. Manuel Hidalgo Medina, chief of the Division of Hematology and Medical Oncology, the Walter B. Wriston Professor of Pancreatic Cancer Research, professor of medicine
- Dr. Douglas Thomas Fearon, professor of medicine

## ABC News

### [Detecting Cancer with a Simple Blood Draw Could Soon be a Reality](#)

November 24, 2021

- Dr. Pashtoon Kasi, assistant professor of medicine

## Targeted Oncology

### [Overview of MET Amplification and MET Exon 14 Skipping Mutations in NSCLC](#)

December 8, 2021

- Dr. Giuseppe Giaccone, professor of medicine, professor of medicine in cardiothoracic surgery

## The New York Times

### [As Covid Deaths Rise, Lingering Grief Gets a New Name](#)

December 8, 2021

- Dr. Holly G. Prigerson, the Irving Sherwood Wright Professor in Geriatrics II, professor of sociology in medicine

## Crain's New York Business

### [Weill Cornell Receives \\$6.5M Department of Defense Grant for Breast Cancer Research](#)

December 9, 2021

- Dr. Silvia C. Formenti, chair of radiation oncology, the Sandra and Edward Meyer Professor of Cancer Research, professor of medicine
- Weill Cornell Medicine

## POLITICO

### [The Department of Defense has Awarded Weill Cornell Medicine \\$6.5 Million Grant for Breast Cancer](#)

December 9, 2021

- Dr. Silvia C. Formenti, chair of radiation oncology, the Sandra and Edward Meyer Professor of Cancer Research, professor of medicine

# Meyer Cancer Center Faculty Members in the News (Select) | July 2021–June 2022

## CBS News

### [Breast Cancer Study Finds Disparities in Research and Treatments for Black Women](#)

February 23, 2022

• Dr. Vivian Bea, a breast surgical oncologist at NewYork Presbyterian-Weill Cornell and chief of breast surgery at NewYork-Presbyterian Brooklyn Methodist Hospital.

## Targeted Oncology

### [Case 1: High-Risk, HR+/HER2- Early-Stage Breast Cancer](#)

March 2, 2022

• Dr. Massimo Cristofanilli, assistant professor of medicine (interim)

## The New York Times

### [How Long Should it Take to Grieve? Psychiatry has Come Up with an Answer.](#)

March 18, 2022

• Dr. Holly G. Prigerson, The Irving Sherwood Wright Professor in Geriatrics II, professor of sociology in medicine

## Clinical Oncology

### [Scientists Identify Gene Driving Breast Cancer Metastasis](#)

April 1, 2022

• Dr. Massimo Cristofanilli, assistant professor of medicine (interim)

## Science

### [New Generation of Cancer-Preventing Vaccines Could Wipe Out Tumors Before They Form](#)

April 7, 2022

• Dr. Steven Lipkin, the Gladys and Roland Harriman Professor of Medicine, professor of medicine

## The Asco Post

### [Silvia C. Formenti, MD, on Adapting Radiation Therapy to Immune Checkpoint Blockade](#)

April 13, 2022

• Dr. Silvia C. Formenti, chair of radiation oncology, the Sandra and Edward Meyer Professor of Cancer Research, professor of medicine, professor of radiation oncology

## Obroncology

### [Strategies to Overcome Genetic Testing Roadblocks in Ovarian Cancer](#)

May 26, 2022

• Dr. Eloise Chapman-Davis, associate professor of obstetrics and gynecology

## ABC

### [Racial Minorities have Higher Death Rates from Cancer than White Patients, Study Shows](#)

June 8, 2022

• Dr. Lisa Newman, chief of breast surgery, assistant professor of surgery

## Forbes

### [The Cancer Grand Challenges Program Awards \\$100 Million to Four Research Teams](#)

June 16, 2022

• Dr. Marcus DaSilva Goncalves, the Ralph L. Nachman Research Scholar, assistant professor of medicine, assistant professor of biochemistry